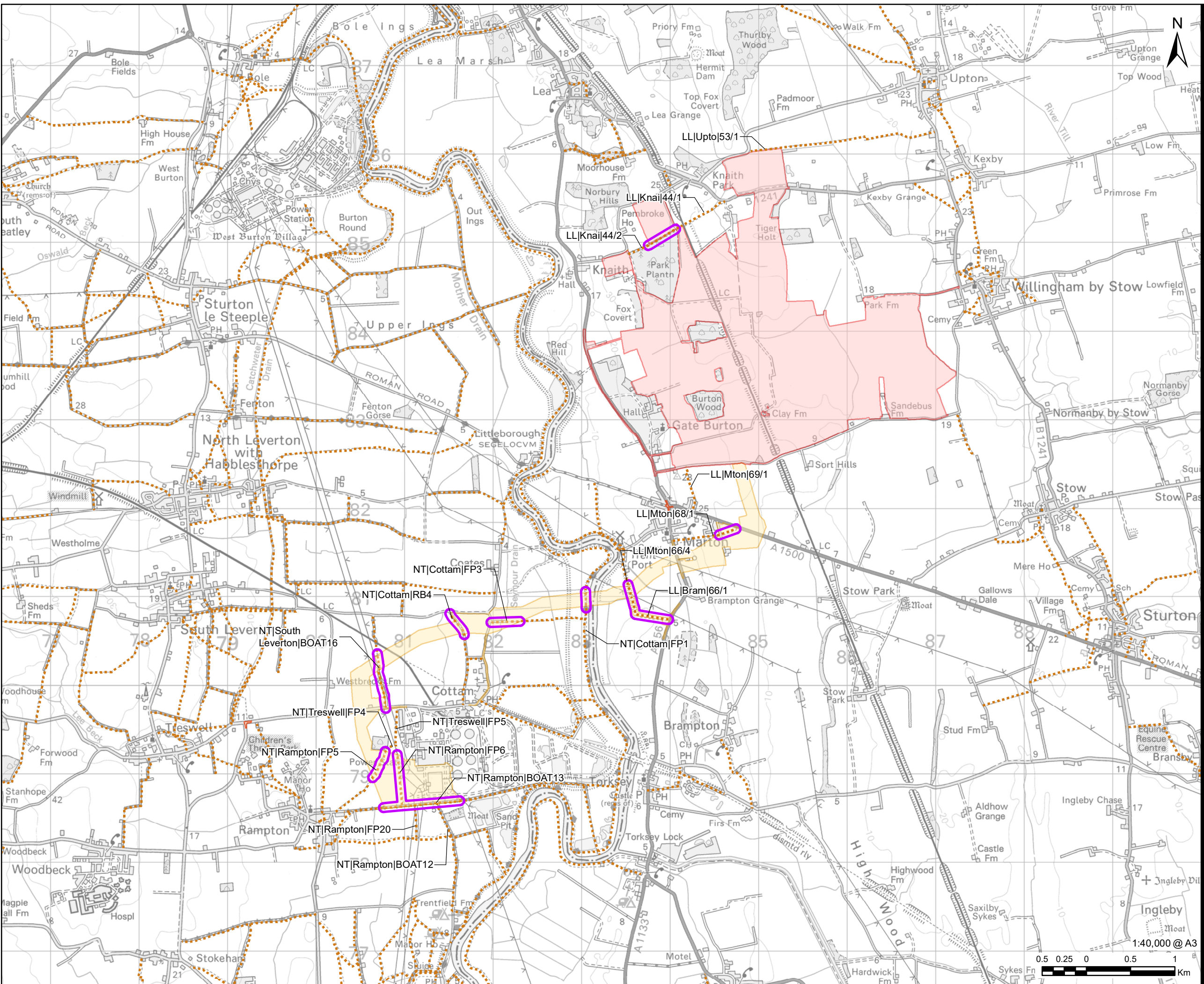


Revision: 01 Drawn: VC Checked: MW Approved: WB Date: 2022-12-07
Filename: I:\na.aecom.com\fs\EMEACroydon\UKCRD\1\gaoy\UKCRD\FP001-V1\IE\projects\general\GIS\Projects\Gate Burton Energy Park\K02_Maps\Environmental Statement\Chapter 13 - Transport\TPT_ES_Figure13_7_ProManagement.mxd



AECOM

PROJECT
Gate Burton Energy Park

CLIENT
 Gate Burton ENERGY PARK

CONSULTANT
AECOM Limited
Sunley House
4 Bedford Park
Surrey, CR0 2AP, UK
www.aecom.com

LEGEND

- Solar and Energy Storage
- Grid Connection Corridor
- Areas to be Managed
- Public Right of Way

NOTES
© Crown copyright and database rights 2022.
Ordnance Survey 0100031673. Contains
Lincolnshire and Nottingham County Council
data.

ISSUE PURPOSE
Environmental Statement

PROJECT NUMBER
60664324

FIGURE TITLE
Public Right of Way (PRoW)
Management (Construction Phase)

FIGURE NUMBER
Figure 13-7

This drawing has been prepared for the use of AECOM's client. It may not be used, modified, reproduced or relied upon by third parties, except as agreed by AECOM or as required by law. AECOM accepts no responsibility, and denies any liability whatsoever, to any party that uses or relies on this drawing without AECOM's express written consent. Do not scale this document. All measurements must be obtained from the stated dimensions.